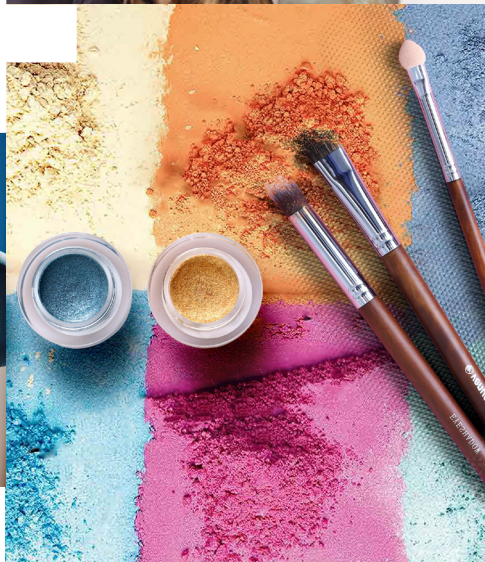




# HAIR & BEAUTY AT MORVEN

Pricelist **2024/25**



**NORTH, WEST AND HEBRIDES  
A TUATH, AN IAR IS INNSE GALL**

Hair & Beauty at Morven

Open Wednesdays  
**1.00pm - 7.00pm**

# WELCOME TO

## Hair & Beauty at Morven

All services carried out in Hair & Beauty at Morven are fully supervised and checked by our highly trained members of staff. Our students produce a high standard of work, although they do take a little longer than a more experienced pair of hands.

We are sure that you will be impressed by the quality of services you receive. We welcome any feedback from our clients. If you are dissatisfied in any way, please do not hesitate to let us know.

We thank you very much for your custom and we hope you enjoy your experience.



Under the European Legislation Act we can not carry out any chemical processing services on a child below **16 years of age**.

All chemical services must have skin tested **24/48 hours** prior to treatments.

---

## Party Girls

### Princess Party Group

For children under the age of 10.

This includes either a Hair-Up, Curls or Pleat followed by a Nail Paint and light Make-Up. All for only **£10.00 per person**.

### High School Diva Package

For young ladies between the ages of 11 & 16.

This includes either a bouncy Blow Dry, Curls or Hair-Up followed by either Gel Polish or Make-Up. **£17.00 per person** (Discount for large groups)



# Hair

|                    | Level 2 | Level 3 |
|--------------------|---------|---------|
| Shampoo & Set      | £7.00   | £9.00   |
| Blow Dry           | £7.00   | £9.00   |
| Bouncy Blow Dry    | £8.00   | £10.00  |
| Wet Cut            | £9.00   | £11.00  |
| Gents Cut          | £5.00   | £7.00   |
| Cut, Shampoo & Set | £9.00   | £13.00  |
| Cut & Blow Dry     | £9.00   | £13.00  |
| Long Hair Up       | £9.00   | £11.00  |

---

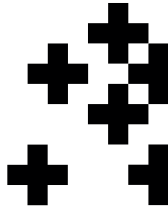
# Specialised Treatments

Level 2

These treatments include full in-depth consultations.

|   |        |
|---|--------|
| Stand Alone Wellaplex Treatment & Blowdry | £20.00 |
| Intense Conditioning Treatment & Blowdry  | £10.00 |

---



# Colouring

|   | Level 2                        | Level 3 |
|---|--------------------------------|---------|
| Semi Permanent                          | £14.00                         | £15.00  |
| Quasi                                   | £15.00                         | £18.00  |
| Permanent Tint                          | £23.00                         | £25.00  |
| Cap High / Low Lights                   | £18.00                         | £20.00  |
| Full Head Tint & Highlights             | £40.00                         | £45.00  |
| Wellaplex Treatment Added To Colour     | £10.00                         | £10.00  |
| Full Head Bleach & Toner/Fashion Colour | £42.00                         | £48.00  |
| Colour Correction                       | NA                             | £50.00  |
| T-Section Foils                         | £28.00                         | £32.00  |
| Full Head Foils                         | £35.00                         | £40.00  |
| Balayage / Ombre                        | £45.00                         | £50.00  |
| Toner                                   | All toners vary from £6 to £13 |         |



## Nail Care

|                         |        |
|-------------------------|--------|
| Manicure 1 Hour         | £13.00 |
| Pedicure 1 Hour         | £13.00 |
| File & Paint 15-30 Mins | £8.00  |
| Gel Polish Nails        | £18.00 |

### PARAFFIN WAX PEDICURE 1 hour **£15.00**

A luxury pedicure consisting of the usual pedicure treatment with Vitamin E moisturising cream plus a paraffin wax mask applied to the foot and toenails. The warmth of the mask helps to intensify the cream deep into the skin, creating a nourishing effect. Excellent treatment if you suffer from hard skin on the soles of your feet.

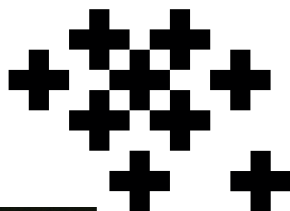
### PARAFFIN WAX MANICURE 1 hour **£15.00**

A luxury manicure consisting of the usual pedicure treatment with Vitamin E moisturising cream plus a paraffin wax mask applied to the hands and nails. The warmth of the mask helps to intensify the cream deep into the skin, creating a nourishing effect.

PLEASE ALLOW 15 MINUTES DRYING TIME FOR ALL MANICURE/PEDICURE POLISHES

**GEL  
POLISH  
NAILS  
ONLY  
£18.00**

---







## Body Massage

|                                      |               |
|--------------------------------------|---------------|
| Hot Stone Massage                    | <b>£19.00</b> |
| Aromatherapy Massage 1 Hour          | <b>£16.00</b> |
| Swedish Massage: Full Body 1 Hour    | <b>£16.00</b> |
| Tension Massage 30 Mins              | <b>£11.00</b> |
| Add Gs Or Infrared For An Additional | <b>£2.00</b>  |

---

## Facials

|                            |               |
|----------------------------|---------------|
| Prescriptive Facial 1 hour | <b>£16.00</b> |
| Paraffin Wax Facial 1 hour | <b>£16.00</b> |

This luxury facial consists of a usual deep cleanse treatment with a moisturising cream and paraffin wax mask applied to the skin. The warmth of the mask helps to intensify the cream deep into the skin creating a nourishing effect. Excellent for dry skin types and due to its hydrating properties also helps reduce fine lines and wrinkles. A relaxing facial massage is included.

---

# 10

## benefits of massage therapy

1. Reduces tension in the muscles
2. Enhances circulation
3. Relieves stress
4. Speeds healing of soft tissue injuries
5. Improves mental alertness
6. Boosts immune function
7. Stimulates movement of lymphatic fluid
8. Improves joint mobility
9. Improves sleep quality
10. Eases muscle pain

## Advanced Facials

**GALVANIC FACIAL 1 hour** **£18.00**  
This treatment is suitable for all skin types; an ampoule with therapeutic ingredients specific to your skin type is applied leaving the skin feeling revitalised.

**DIRECT HIGH FREQUENCY 1 hour** **£18.00**  
Direct high frequency is an excellent facial for oily/combination skin types. The treatment generates ozone which has a germicidal effect on the surface of the skin. Clients will feel a pleasant, warm, tingling sensation. This treatment can also be carried out on the back to reduce oily breakouts.

**MICRO-CURRENT FACIAL 1 hour** **£18.00**  
This treatment gives the skin a youthful appearance by helping improve fine lines, wrinkles and having a toning effect on the muscles. The colour and texture of the skin is also greatly improved. It is most beneficial for mature skin types. A course of twelve treatments is recommended to maintain results.

**MICRODERMABRASION FACIAL 1 hour** **£21.00**  
Share the celebrities' favourite skin care secret. Ever wondered how those famous faces stay looking so young? Crystal Clear Microdermabrasion literally takes years off you by gently exfoliating the outer layers of skin. Crystal Clear Microdermabrasion treats a vast array of skin concerns, on both the face and body using a safe and controlled method of skin resurfacing. The treatment provides immediate visible results for ageing skin, lines and wrinkles, open pores, blackheads and pigmentation, blemish scars, acne scars, stretch marks and much more.

.....

## Body Electricals

**FARADIC SLENDERTONE 30min** **£11.00**  
Benefits and effects include improved tone of specific muscles, producing a reshaping affect for figure correction. Clients will feel slight contractions as the muscles tighten and relax. An excellent treatment for clients who would like a little helping hand to tone up their abdomen, hips, buttocks & thighs. The course of 12 treatments is recommended to maintain results.

**GALVANIC BODY TREATMENT 30min** **£11.00**

**VACUUM SUCTION 30 min** **£11.00**  
Both of these treatments helps to improve the appearance of cellulite by eliminating toxins from the body through lymphatic drainage. Body Galvanic uses specialised products, to penetrate deep in to the skin, improving the appearance of cellulite. Both treatments can be used in conjunction with slendertone, Vacuum Suction has a slimming effect on the area being treated by improving the body contours, through light suction.

**MICRODERMABRASION BODY 30min** **£16.00**  
Improve the appearance of scar tissue, stretch marks & age spots

# Eye Treatments

**A patch test is required 24 hours prior to every treatment**

|  |        |
|--|--------|
| Eyelash Tint 15 mins                           | £9.00  |
| Eyebrow Tint 15 mins                           | £7.00  |
| Eyebrow Tidy 15 mins                           | £7.00  |
| Eyebrow Tidy and Tint 30 mins                  | £11.00 |
| False Eyelashes (strip and individual) 30 mins | £9.00  |
| Eyelash Extensions                             | £18.00 |

---

# Tanning

|  |        |
|--|--------|
| Full Body Spray Tan up to 30 mins                    | £16.00 |
| Full Body Cream Application (inc exfoliation) 1 hour | £16.00 |

---

# Waxing

**Temporary hair removal using 100% natural, high quality wax**

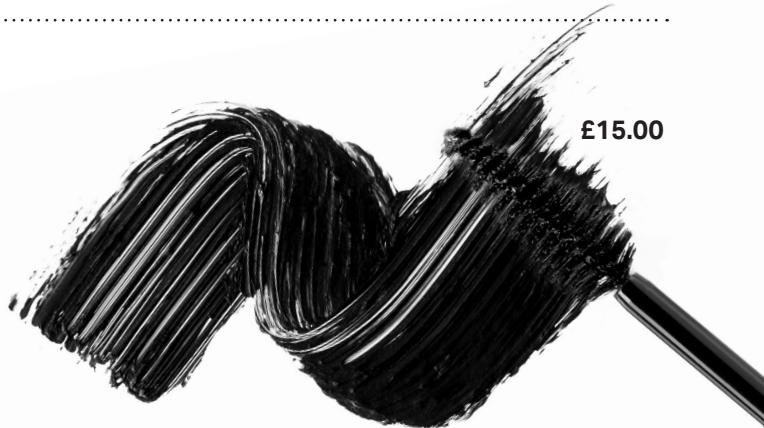
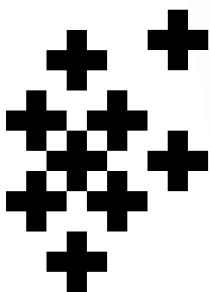
|                                  |        |
|----------------------------------|--------|
| Eyebrow 15 mins                  | £7.00  |
| Upper Lip and Chin 15 mins       | £8.00  |
| Half Leg 30 mins                 | £10.00 |
| Full Leg 1 hour                  | £12.00 |
| Bikini Wax up to 30 mins         | £8.00  |
| Underarm 15 mins                 | £8.00  |
| Full Leg & Bikini 1 hour 15 mins | £14.00 |
| Lip or Chin 15 mins              | £7.00  |

---

# Make Up

Day/Evening Make Up

£15.00



Retail products from



available to purchase

## Gift Vouchers

Available for all services at the House of Morven.  
Please ask a member of staff for more details.

**UHI** | **NORTH, WEST AND HEBRIDES  
A TUATH, AN IAR IS INNSE GALL**  
Hair & Beauty at Morven

**Hair & Beauty Reception** +44 (0) 1847 889540

The Hair & Beauty Reception is only available during salon hours

**UHI North, West and Hebrides Reception:** +44 (0) 1847 889000

**[www.nwh.uhi.ac.uk](http://www.nwh.uhi.ac.uk)**

or find us on Facebook

**[www.facebook.com/houseofmorven](https://www.facebook.com/houseofmorven)**

Morven Building, UHI North, West and Hebrides,  
Ormlie Road, Thurso, KW14 7EE